

K5

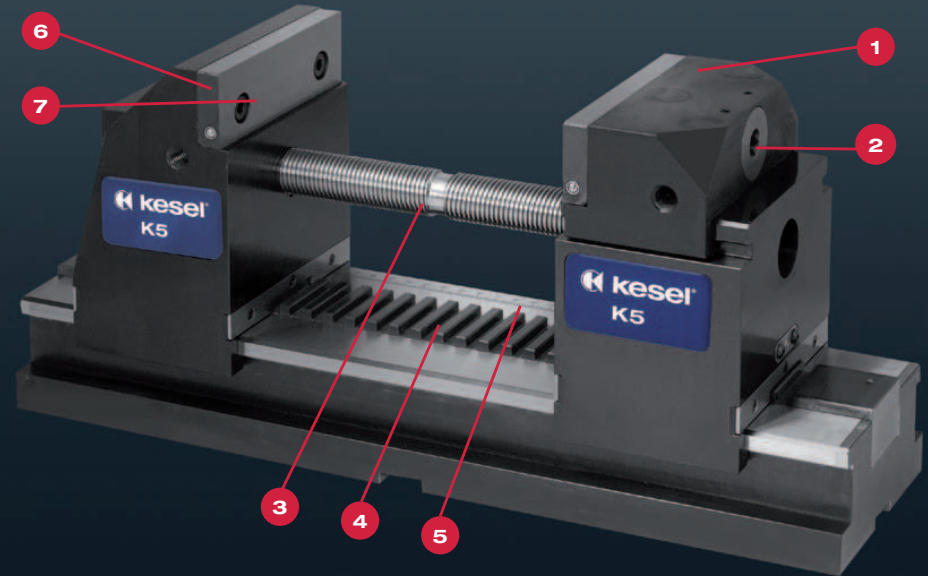
Innovative 5-sided machining

With an optimal accessibility for the machine tool to the workpiece during 5-side machining

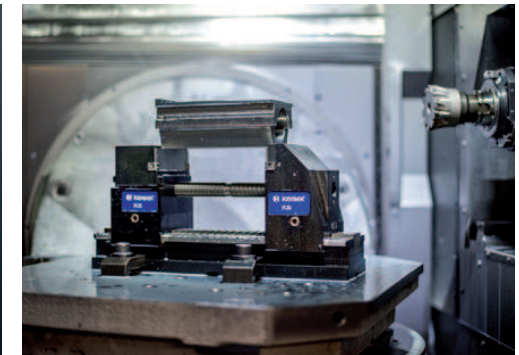
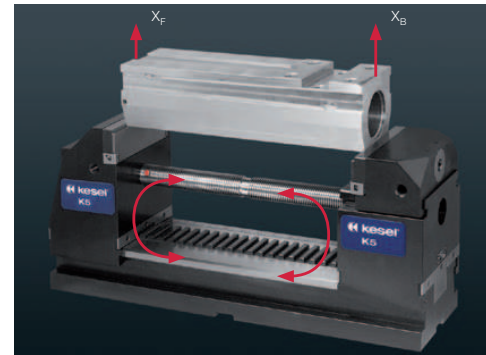
- > 5-side accessibility
- > Pre-load system for high precision and zero vibrations
- > Quick and easy to adjust
- > Large clamping stroke of 16 mm
- > Easy handling
- > Extensive range of jaws

Scope of delivery:

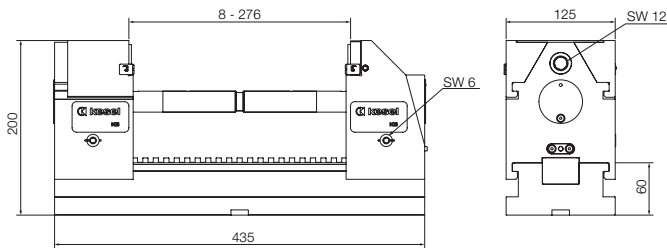
2 hardened clamping jaws, 1 socket, 1 short and 1 long spindle, 1 allen wrench
Without clamping claws



- 1** > Perfect workpiece accessibility for 5-axis machining
- 2** > Clamp tightening using a torque wrench
Max. clamping force of 40 kN with 100 Nm
- 3** > Spindle for quick adjustment of clamping width
> Spindle can be quickly changed for short clamping widths
> Pre-loading of the vise
> Large adjustment range
- 4** > Simple and fast rail system for adjusting the position of the vise on the base with visual reference.
- 5** > Visual scale rule for quick re-positioning of the vise
- 6** > Kesel screw-on clamping jaws (see accessories)
- 7** > Kesel 'Click-On' clamping ledges in varying heights (optional)



Technical specifications:



Jaw width	125 mm
Order No.	04.25.157.1001
Max. Clamping force	40 kN
Weight	45 kg
Clamping width (short spindle)	8 - 146 mm
Clamping width (long spindle)	138 - 276 mm

The Kesel Pre-load System:

- > Unique, Kesel K5 dual spindle design
- > The vise can be pre-loaded via the secondary, adjustment spindle
- > Deflection in the vise is minimised
- > Workpiece deflection is close to eliminated

- > Very high parallel accuracy
- > Extremely high workpiece holding precision allows for machining of the 6th side
- > Deflection in the base of the vise is eliminated allowing perfect vise fixing via zero-point, quick-change bolts.

K5 accessories



Smooth clamping jaw hardened, ground, standard equipment
Smooth clamping jaw soft (1.2842), milled, for the fabrication of moulding jaws

Clamping jaw with linear grooves for firmly gripping the workpieces

Size	Order no. Smooth clamping jaw hardened	Height	Thick- ness
125	01.25.152.014.4	39,2	12
Smooth clamping jaw soft			
125	01.11.105.002.5	39,2	12
Clamping jaw with linear grooves			
125	01.11.105.001.5	39,2	12



Smooth clamping jaw with step, hardened and ground, for saving clamping supports

Size	Order no.	Step	Thick- ness	Height
125	01.11.105.003.5	3 x 6	12	39,2



Clamping jaw with corrugation hardened and ground

Size	Order no.	Height	Thick- ness	Gripper Order no.	Thread
125	01.26.160.035.3	40	12	01.26.160.048.4	M10



Grip clamping jaw, hardened, with step

Size	Order no.	Height	Thickness
125	01.25.150.0002	40	12

K5 accessories



Prism jaws with horizontal prism 120°
hardened and ground

Size l	Order no.	Height	Thick- ness	Clamping diameter	
				with 1 jaw	with 2 jaw
125	01.11.105.005.4	39,2	20	ø 9-50	ø 14-50



Prism jaw with horizontal and vertical prism 90°
hardened and ground

Size l	Order no.	Height	Thick- ness	Clamping diameter	
				with 1 jaw	with 2 jaw
125	01.11.105.004.4	39,2	28	ø 15-42	ø 24-42



Workpiece stop adjustable

For size	Order no.	Thread
125	03.11.008.001.4	M 12



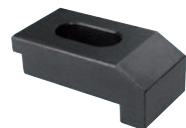
Step ledges

For size	Order no.	Height	Thickness
125	03.25.160.023.9	22	3
125	03.25.160.024.9	35	3
125	03.26.160.002.9	39	3



Torque wrench

Order no.
70.28.007.202.9



Clamping claws

Order no.
01.23.201.010.4